



HKTC Telescopic Boom Type

# Stationary Crane



# High value-added **Stationary** Crane

By manufacturing innovative lifting equipment to fulfill your needs, HKTC continues to share new experiences and values we make to you.

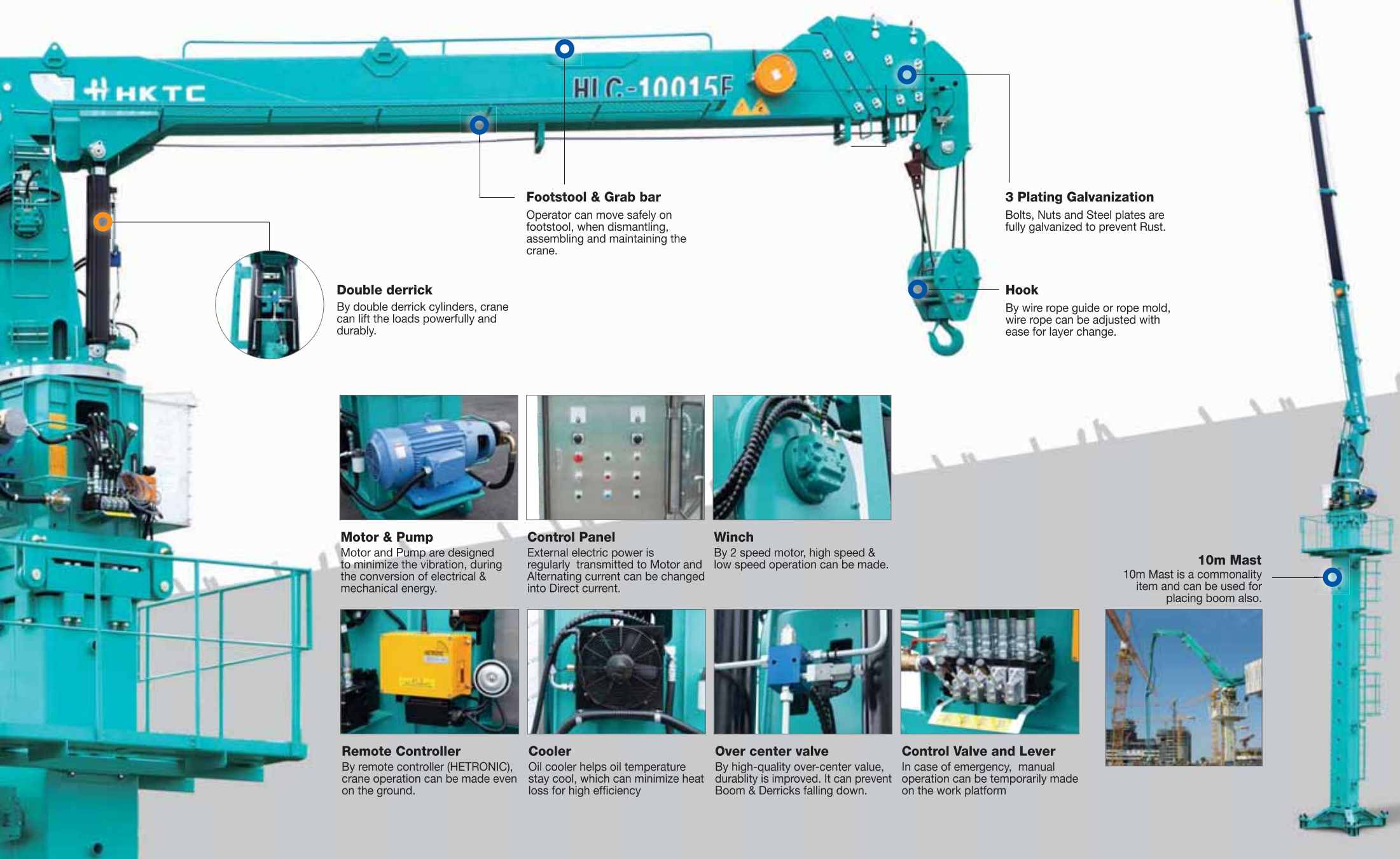
HKTC's stationary crane is a complementary Goods of Tower Crane in construction sites, which can be operated for the streamlined lifting work even in confined place.



# Premier Performance

Reliable, Durable, Maneuverable and Innovative Telescopic Boom Type Stationary Crane

Designed to maximize capability, durability and convenience, starting from development stage.



### Footstool & Grab bar

Operator can move safely on footstool, when dismantling, assembling and maintaining the crane.

### 3 Plating Galvanization

Bolts, Nuts and Steel plates are fully galvanized to prevent Rust.

### Hook

By wire rope guide or rope mold, wire rope can be adjusted with ease for layer change.

### Double derrick

By double derrick cylinders, crane can lift the loads powerfully and durably.



### Motor & Pump

Motor and Pump are designed to minimize the vibration, during the conversion of electrical & mechanical energy.



### Control Panel

External electric power is regularly transmitted to Motor and Alternating current can be changed into Direct current.



### Winch

By 2 speed motor, high speed & low speed operation can be made.



### Remote Controller

By remote controller (HETRONIC), crane operation can be made even on the ground.



### Cooler

Oil cooler helps oil temperature stay cool, which can minimize heat loss for high efficiency



### Over center valve

By high-quality over-center valve, durability is improved. It can prevent Boom & Derricks falling down.



### Control Valve and Lever

In case of emergency, manual operation can be temporarily made on the work platform

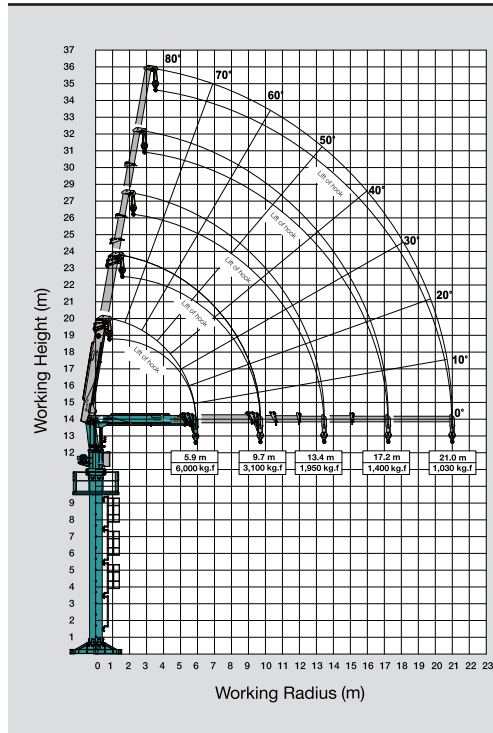
### 10m Mast

10m Mast is a commonality item and can be used for placing boom also.



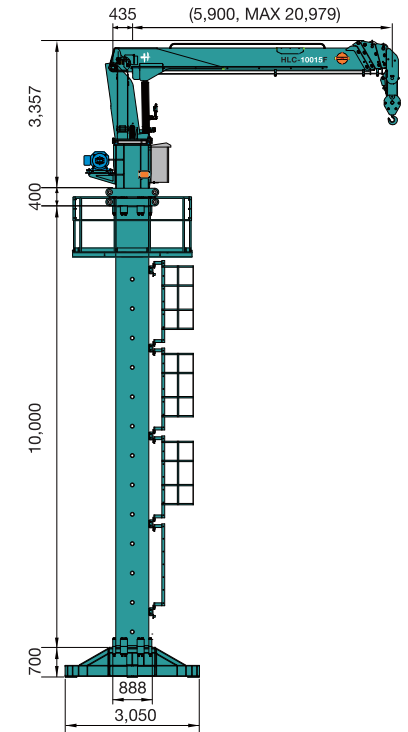
# Stationary Crane (HLC-10015F)

## WORKING RADIUS / SPECIFICATION



Max. Lifting Capacity (최대 인양 능력)		10,000 kg / 3.0 m
Max. Working Radius (최대 작업 반경)		1,030 kg / 21.0 m
Min. Working Radius (최소 작업 반경)		2.0 m
Rated Oil Flow (정격 유량)		73 cc / rev
Max. Pressure (최대 압력)		210 kg / cm <sup>2</sup>
Oil Tank Capacity (작동유 탱크 용량)		250 ℓ
Winch (윈치)	Type (형식)	와이어 로프 Ø 14x120 m [ 19x7 비자전성 ]
	Hook Speed (권상 속도)	13 m / min (4/4), 저속시
Power (동력)	Type (형식)	Hydraulic power unit / 50HP. 6P
	Power Supply (전원)	380 V / 60 Hz (To be changed, according to construction site or operator's requirements.)
Working Type (작동 방식)		Remote Controller (리모트 컨트롤러, HETRONIC사) 및 수동 작동 가능
		Pressure relief valve for hydraulic circuit (유압 안전 밸브)
		Counterbalance valve for derrick and telescopic cylinders (데릭 오버 센터 밸브 & 텔레스코픽 오버 센터 밸브)
		Automatic Hydraulic brake for winch (윈치 자동 유압 브레이크)
		Hook safety latch (후크 안전 고리)
		Over-winding Prevention Device (과권 방지 장치 및 경보장치)
		Oil Cooler (오일 콜러)
Safety Devices (주요 안전 장치)		Over-load Prevention Device (과부하 방지 장치)
		Safety belt & Grab bar (안전벨트 및 난간대)

## DIAGRAM



### Remarks

1. According to Boom section adjustment and optional item application, variant models can be available.
2. The specifications are subject to change without prior-notice, according to product improvements.
3. The separate Contract with specification sheet prevails the above-mentioned Specification.